

# News of Grace

Monthly Newsletter ♦ February 2016



## All Church Retreat

### What is God calling Grace Lutheran to be and do?

#### All Church Retreat Follow Up

Thirty four members attended the all day retreat on Saturday, January 9<sup>th</sup>—it was an incredibly moving experience for all of us as we prayed together, studied the Bible together and shared our thoughts and opinions.

A number of next steps are coming in this process. ALL ARE STILL INVITED to join in — YOUR VOICE IS NEEDED!! Remember, each of us is a valuable member and voice in determining our future as God's church. Please take time to look at the work done so far—the dining hall is full of our thoughts in writing. We want to share it with everyone!

Next in the process, the leadership team is looking at all the statements and drafting PURPOSE STATEMENTS and GUIDING PRINCIPLES based on the retreat work for everyone to consider. Council will review these on Feb. 16<sup>th</sup>. Then small group meetings in member's homes and at church will begin —some in the afternoon, some in the evening – so every member has an opportunity to be involved and every voice heard! These meetings will be offered during the week of Feb 22<sup>nd</sup>. Sign up sheets are on the table in Narthex outside the offices.

This is an empowering process—people passionately engaged, growing their faith and listening to the Holy Spirit at work in us as individuals, a church, and a community. We will keep you informed — **WE NEED YOU TO JOIN IN!!!!**

See Pastor Tom, Joelyn Rich, Sandy Welch, Sharon Engstrom or Vicki Denstaedt for more info.



Our annual meeting will be held  
**Sunday, March 13**  
following 9:30 a.m. worship.

Please plan to attend!

### Mid-Week Lenten Soup Supper at Grace

Grace Lutheran is hosting the Lenten Soup Supper on Wednesday, February 17. We are planning for 175-200 people, and we are in need of soups (approximately 15) and breads. We are also looking for setup and cleanup help. Sign-up sheets are located in the Narthex. Contact Jeanne Pankey (354-2416) for more information.



As we look forward to Lent and a time of reflection, I feel the need to look further forward to the time beyond Lent. That feeling is not really surprising as we have spent time this month trying to listen to where God is calling us as a body of Christ, where God is guiding our gifts and using them for the new Kingdom that is being built.

Lent is a time for reflection on how we have been following God. We tend to make that a look back. What have I done that wasn't the way to follow? What have we done that isn't right?

Another way is, What do I need to do to follow more closely? What do I take on or change that has God guide me more toward God's desires and not mine? Metanoia, repentance, is to turn, turn in the right direction, turn toward following God more. That very fundamentally means a change.

In the All Church Retreat, we looked for what God was doing in the scripture and then how the people participated in God's work and what guided their decisions. It was a fascinating exercise to express in our words what we saw going on. Then the question becomes, what that we have discovered should guide us?

We are working on that and you will see and hear more in the coming weeks. See and hear how you can participate in further discerning how we as a church turn toward God. What guides us in being faithful. Then ultimately what guides us in the choices we make even further down the road that continue us on this path the church feels it is being called to.

Some have said it seems like a long process. It is made a deliberate process with the time for prayer, scripture, reflection and conversation to make a difference by the involvement of many. That very participation of many helps ensure all have the thoughts available to then be part of the future of what God is calling us to be and do.

It all takes time. When you think about it, God is the one who given a lot of time to get this Kingdom thing right allowing us to turn again and again to get it right. God has given a lot of time for a lot of people to be Kingdom builders. So we are called to spend time on it, live it and then proclaim the peace, justice and love that should embody the Kingdom of God now.

May your Lent be a time of looking forward. May it be time spent in prayer, scripture, reflection and conversation on what God is calling you to do and be. May it be a time of turning toward God and God guiding you to a new future in the Kingdom.

God's blessing on you and for you.

*Pastor Tom*





Thelma Stevens, Debbie Anderson,  
Marilyn Whitscell, Sara Kamyszek, Bunny  
Lyon Clapp, Richard Clapp, Erv Simi,

Jeanette Grove, Elfie Jahnke, Lorraine  
Leathead, Gloria Moore, Dave

Chroninger, Harold & Jean Kissau, Jim Malaski, Karen &  
Walter Spigelmyre, Dorothy Gentry, Emma Nelson, Iris  
Snyder, Julie Troy, Bishop Craig Satterlee, Ken Liske, Brett &  
Katie Schoner, Eric Carlson, Tom Laughlin, Martin Suszek,  
Larry Beaudoin, Shirley Johnson, Mike Knoblett, Dennis  
Diamond, Stuart Grenkowicz, Sam Brown, and Jaiden.



### 2016 Flower Chart

The 2016 Flower Chart has been posted in the Narthex. Please sign the chart and fill out an Altar Flowers form (located on the table in the Narthex). Completing this form lets the office know what you would like listed in the bulletin. Forms may be placed in the offering plate or turned in to the office.

## Ecumenical Lenten Series 2016

### Restored in Christ

The season of Lent is a time for us to face together the brokenness of our lives and the world, and then turn that brokenness over to Christ so that we can be restored by him through the cross. Our series looks at broken elements from the Lenten story and how each can lead to restoration.

Join us at our ecumenical series on Wednesday evenings starting Ash Wednesday, February 10<sup>th</sup>, at St. Paul. Soup suppers at 6:00 p.m., services at 7:00 p.m.

Date	Host Church	Theme	Preacher
Ash Wednesday February 10	St. Paul Lutheran	Broken Hearts	Sr. Mary Hughes
February 17	Grace Lutheran	Broken Vessel	Rev. Gene Bacon
February 24	First Congregational UCC	Broken Trust	The Very Rev. Bill McClure
March 2	First Presbyterian	Broken Bread	Rev. Shirley Ross- Jones
March 9	St. Bernard	Broken Promise	Rev. Dr. Bob Case
March 16	First United Methodist Church	Broken Justice	Pastor Tom Orth
Maundy Thursday March 24	Trinity Episcopal		Rev. Paul Lance

The offering from the series will be split between Call Us for Help, Friendship Room at St. Bernard's and Sunday Supper at Trinity Episcopal.

If you wish your Lenten envelopes to go toward the series offering, please write "ecumenical" on the envelope.

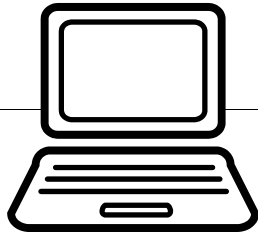
## Write Documents on Your Computer in January, February & March

The **INTRODUCTION TO WORD PROCESSING COMPUTER CLASSES** will again be offered on Thursdays February 11th and March 10th at 11 am. In addition to our own members, it is being made available to a limited number of Association of Lifelong Learners (ALL) members. With Council's approval, this is an effort to reach out into the community sharing the resources and gifts we have. It is limited to 6 ALL members but unlimited to church members.

We will cover some of the basics again as well as tackle some sample projects that members or others want to do. Be sure to mark your calendars and bring your questions to class. And maybe meet a few new people.

See Pastor Tom with questions.

## Computer, Laptop or Tablet replaced in your home this Christmas?



Your Older Equipment maybe be valuable for others.

We are gathering older equipment for some computer classes. Even if your computer is not working some parts maybe able to upgrade other computers. Laptops are especially useful. Accessories like keyboards, mice, printers and power supplies are useable too. Any software that came with your computer or you are no longer using could valuable too. Anything that is unuseable will be recycled environmentally.

Your personal information and data on your old computer will be erased before it is reused.

Talk with Pastor Tom for more information or if you have questions.



## Reports Due

A reminder to all continuing and outgoing work group leaders...

Annual reports are due in the church office by Monday, February 1, 2016.

## Ruth Circle

The Ruth Circle (women of Grace) will NOT meet in February but will schedule a meeting in March. This is due to the fact that on Feb 17th we will be hosting the "Soup and Bread" supper for the Lenten services at Grace.

### Trinity Episcopal Church

## Chocolate Extravaganza

Saturday, February 6 ~ 2-4:00 p.m.

Treat your Valentine to two hours of sampling the most decadent chocolate desserts that



you can imagine accompanied by live easy-listening music provided by Kat Tomaszewski and chocolate-themed door prizes!

Cost: \$10 donation. Proceeds to benefit the Parish Scholarship Fund. Tickets available at the door or call 356-0576 for reservations.



## Want to help people and animals and have some fun?

Go to:

**freerice.org**  
or  
**freekibble.com**

and see how smart you are?

Answer a few questions and donations are made to feed people or animals!

## Thrivent Members

You have resources to help spread the word of God's love and grace

Your Action Team grants from Thrivent can help Grace get the word out on what God is doing in the world. It could support a fund raiser, an educational event or a service project. Thrivent provided 2 \$250 grants per member per year.

Talk to Pastor Tom or Peggy about what that means. And see what is coming up at Grace or in the community that could use that help getting the word of God's love out.

Remember to designate your choice dollars also, for charitable organizations.



## Religions Study Group

**St. Paul Lutheran Church Multi-Purpose Room  
February 15 at 7:00 p.m.**

The Religions Study Group invites you to join us February 15, as we explore the topic "Islam: Beyond the Radical" with comparative religion scholar, Kim (Beyer) Nunneley. She will explore one of the lesser known aspects of Islam--the contemplative Sufi orders. Come experience the soaring poetry of Rumi and Hafiz, view a session of Whirling Dervish meditation and the breathtaking calligraphy of Islamic art, then visit a bit about the prayer and meditation practiced by these quiet and gentle faces of Islam. Kim Nunneley holds a master's degree in comparative religion from Western Michigan University and completed a year studying adult spiritual formation at the Iliff School of Theology in Denver, CO. She is the author of several books, including "This Nurturing Awe: Poems Inspired by the 99 Beautiful Names of God" and "The Hidden Message of the Lost Gospel of Thomas."

We will once again meet in the Multi-Purpose Room at 7:00 p.m., February 15 as we seek to understand how we are all connected beyond our apparent differences. For further information call 989-255-9541 or 989-356-4834.

## Community Celebrating & Sharing Dinner

The **Community Celebrating and Sharing Dinner** is **April 3, 2016**...thanks to Jon Benson's generous offer once again this year!!! We are looking for anyone interested to serve on one of the many committees that make this dinner the success that it has been. Each year this dinner has grown in attendance and support for the community because of Jon and the time given by the volunteers. See Cheryl Werblow 354-5560 or Dawn Anderson 657-6923 for further info.

### NEEDED

Blue wine bottles are needed to create centerpieces for the Community Celebrating & Sharing Dinner. Bottles may be dropped off in the kitchen any time. See Eleanor Coddington for more information.



## Interfaith Amigos are coming to Alpena Keynote Speakers for 30 Days of Peace September 22, 2016

Imam Jamal Rahman, Pastor Don Mackenzie and Rabbi Ted Falcon in their presentations share why interfaith dialogue is so critically important in our world, and how each of their Abrahamic traditions both support as well as inhibit that deeper dialogue. There will be 2 workshops during the day and an evening presentation at Beck Auditorium at the Alpena High School.

To learn more about them see:

<http://interfaithamigos.com/Home.html>

Pastor Tom is working on the publicity and marketing for the event. **HELP IS NEEDED in lots of ways.** Interested? See him.

# Outreach and Mission

## Local

### Discipleship



#### Items Needed:

- \* Tuna & Tuna Helper
- \* Peanut Butter & Jelly
- \* Pancake Mix & Syrup  
(Just add water kind)
- \* Elbow Macaroni

*The collection basket is located outside the church office. All items collected will be donated to Trinity Episcopal's food pantry.*



### Loving Care Members

We will meet at 10:30 a.m. on Tuesday, February 9 to bake cookies and make some special goodies. The youth will be making truffles and Ruth Circle will buy fruit for the goodie bags. Come join the fun!! We will be delivering the goodies on Wednesday, February 10 starting at 10:30. Since this is Ash Wednesday we will be offering Ashes to Go; we will offer ashes to any of the Loving Care members who want them along with a short devotion. Come take part in these deliveries for these special members of our congregation!!

### Child & Family Services/Grace Lutheran

#### **Walk-Me-Home Event ~ Saturday, June 11, 2016**

This year's Walk-Me-Home event for Child and Family Services Foster Children Program will be held on Saturday, June 11, 2016. Plan to take part this year. More info to follow.

---

## Statewide

### Flint Water Crisis

We are in the process of coming up with a plan to help out a sister congregation, Salem Lutheran Church, in Flint Michigan. They are right in the middle of the poorest neighborhood in Flint and are wanting to put in a filtration system which would allow people in that entire neighborhood to get safe water at that location. More info will be available soon.

### LSSM Foster Children Program

The need continues for underwear and socks (boys and girls up to age 13). Watch for ads that often include special deals on socks and underwear.

---

## Global

### Bake Locally Act Globally

#### **Grace Lutheran will have "Bread Sunday" on Sunday, February 21.**

We are asking the congregation to bake bread, any type, and bring it to the church on Saturday or Sunday, prior to the service. We will price the loaves. The bread will be sold to help raise money for the ELCA Hunger Relief Fund. **We plan to do this the 3<sup>rd</sup> Sunday of every month.**

If you have questions, please contact Phran Ludington, Joelyn Rich, Chris Christopherson, or Jeanne Pankey.



## Building Schedule

Due to other groups using the church and our weekly cleaning schedule, we ask that anyone wishing to use the kitchen, fellowship hall, lounge or sanctuary call the office to schedule your activity and avoid conflicts. Thanks!

## Large Print Worship Folder

A large print worship folder, hymns and weekly bulletin are available for anyone who would like one. Please ask the ushers for it.

## 2015 Statements

2015 Statements are now available to be picked up. They are located on the table in the Narthex. If you would like yours mailed to you, please call the office (354-



### *Hospitalized?*

Please remember, if you are having surgery or are in the hospital, the only way Pastor is aware of this is if

you, or your designee, call the church office (354-2640) and notify us directly.

## GRACE EV. LUTHERAN CHURCH Staff & Leadership Telephone Numbers

### CHURCH OFFICE 354-2640

Rev. Tom Orth ..... Home ..... 356-8729  
..... Cell ..... 916-8759  
Office Manager ... Peggy Tomaszewski ..... 255-8850  
Music Director..... Berniece Lyon Clapp..... 464-7064

### ADMINISTRATIVE BOARD

President ..... Tom Lappan ..... 356-3718  
Vice-President ..... Harry Kautz ..... 595-3568  
Exec. Secretary ... Sandy Malaski ..... 356-6248  
Treasurer..... Dennis Werblow ..... 354-5560

### WORK GROUP LEADERS/COUNCIL

Education ..... Taylor Denstaedt ..... 916-9250  
Worship ..... Sharon Engstrom..... 354-5133  
Discipleship..... Joelyn Rich ..... 340-0592  
Property ..... Jeff & Sandy Welch..... 595-2195  
Fellowship ..... Thelma Stevens ..... 340-0599  
Finance ..... Rick Engstrom ..... 916-5963

### OTHER V.I.P.s

Stewardship..... Wayne Christopherson.... 356-0430  
Youth Director ..... Vicki Denstaedt..... 916-9258  
WELCA..... Darleen Freel ..... 354-8866  
..... Dorothy Hansen ..... 354-3563  
L.S.S.M..... Kay Grove ..... 727-2054  
Quilters ..... Caroline Weise ..... 354-8060  
..... Dorothy Hansen ..... 354-3563  
LARCC ..... Eleanor Coddington ..... 354-8766  
..... Kay Grove ..... 727-2054

## January 2016

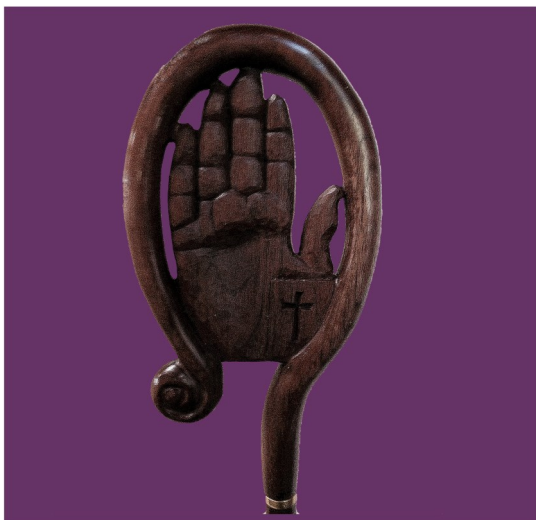
### Finances

GENERAL FUND.....\$ 11,965.00  
BUILDING FUND..... 270.00  
CHRISTIAN GROWTH .....7.00  
MEMORIAL FUND.....25,000.00  
OTHER ..... 2,653.95  
  
TOTAL.....\$ 39,895.95  
(Does not include 1/30 & 31/2016)

### Attendance

SATURDAY WORSHIP (4) ..... 273  
SUNDAY WORSHIP (4) ..... 132  
  
TOTAL ..... 405  
(Does not include 1/30 & 31/2016)





## North/West Lower Michigan Synod

2900 N. Waverly Rd.

Lansing, MI 48906

517-321-5066

### In this issue:

**Bishop's Letter**

**Bulletin Inserts**

**Upcoming Events**

**Congregations in Transition**

## Update on Synod Staffing

As we move through the season of Epiphany, where we continue our focus on the mission of the church, Bishop Satterlee graciously allowed me to author this newsletter's "keynote" message to provide an update regarding changes to synod staffing that will be made to further our mission and ministry together across the Mitten (and beyond).

When Bishop Satterlee was elected in May 2013, it was with a clear understanding that our congregations valued the work of the Bishop and synod staff – including in-person visits by them to lead worship, support call processes, and highlight, support, and engage in other missional endeavors within these congregations.

With this in mind, Bishop Satterlee implemented a deployed staffing model – with a primary synod "desk" (office) in a dedicated space at St. Stephen Lutheran in Lansing and multiple synod "desks" in other locations across the synod. Pr. Sarah Friesen-Carper, Assistant to the Bishop for Congregational Leadership & Excellence, works from a synod desk at Lutheran Church of the Savior in Kalamazoo. Pr. David Sprang, Assistant to the Bishop and Director of Evangelical Mission, works from a synod desk

at Immanuel Lutheran in Mt. Pleasant. There is also a fourth synod desk available at St. Matthew Lutheran in Herron (in the Sunrise Conference).

In addition, Bishop Satterlee and his assistants have made it a priority to be "out and about" in collaborative ministry with our 8 conference deans and with the 113 congregations across the 33,000+ square miles that comprise our synod. If you follow the Bishop and his assistants on social media, you have seen many posts and photos from their congregational visits to preach and preside in worship, support call processes, lead installations of leaders, and participate in other synod leadership events. Specific to support of call processes – since Sept. 2013 we have completed 34 call processes across our synod, we have 23 congregations currently in the call process, and we anticipate 11 more congregations will enter a call process in 2016 or early 2017! In terms of all visits, as of December 2015 the Bishop and assistants have collectively visited all but one of our congregations (visiting 85 congregations more than once). Bishop Satterlee has personally preached in 87 of our congregations and he plans to visit the remaining 26 congregations by November 2016!

*Continued on page 2*



*Continued from page 1*

As the Bishop and his staff begin their third year in ministry together, they continue their commitment to this deployed synod staffing model, which has received positive feedback across the synod. Supported by Synod Council, the conference deans, and with a generous gift from Faith Lutheran Church in Grand Rapids, Bishop Satterlee has added a new Assistant to the Bishop for Synod Life position to his staff starting this month. Leveraging from other synods, Bishop Satterlee has designed this “pilot” position for a parish pastor who will spend 75% of their time leading within their congregation and 25% of their time representing the synod as follows:

- Preach the Word and administer the Sacraments as directed by the Bishop as an extension of the Bishop's own ministry
- Organize and implement synod leadership events, including Co-Workers in the Gospel, Autumn Leadership Event, and Synod Assembly
- Serve as this synod's lead in planning and coordinating joint synod events
- Work with the Bishop to provide meaningful quality continuing education for rostered and lay leaders across the synod
- Aid the Bishop in remaining attentive to the health and well-being of rostered leaders
- Participate with the Bishop and Assistant to the Bishop for Congregational and Leadership Excellence to coordinate mobility processes
- Collaborate in the call process for rostered leaders, particularly in the Jack Pine, Sunrise, and Traverse Conferences.

We are excited to announce that Pastor Christine Ann (Chrysanne) Timm has accepted the call to this new position with full support of her congregation at Advent Lutheran in Lake Ann where her call as Transitional Pastor will continue. Pastor Chrysanne will bring knowledge, skills, and experience from over 30 years in ordained ministry to this new synod position. Prior to moving to Lake Ann, she served as Senior Pastor of Olivet Evangelical Lutheran Church in Sylvania, OH. Prior to that, she served as Associate Pastor at two churches in Toledo, OH. She received a M.Div. from Trinity Lutheran Seminary and a B.A. in Japanese Language and Literatures from The Ohio State University, Columbus, OH. She is also candidate for the Doctor of Ministry degree in Semiotics and Future Studies from George Fox University. Pastor Chrysanne lives in Lake Ann, MI with her husband, Craig. They have one daughter, Holly, and two sons, Matthew and Brian. In her spare time, she enjoys traveling with family and friends, reading, knitting, antique shopping, boating, and Taekwon-Do (she is a first-degree Black Belt).

Please join us in welcoming Pastor Chrysanne to this new position on synod staff!

Sandy Schlesinger  
Synod Council Vice President

# Lay Ministry Training Program Embraces New Name

The church needs equipped leaders. Scripturally-grounded disciples lead with confidence. Mission-driven disciples energize the church. Spirit-led disciples inspire and encourage others. These are the guiding principles for *Equipping Leaders for Mission and Ministry* (formerly Lay Ministry Training Program.)

*Equipping Leaders for Mission and Ministry* (ELMM) invites new participants to begin the program at any time. Several events are planned in the near future. The two-day retreats include Biblical instruction that help us wrestle with common questions:

- Why does the Bible tell such different kinds of stories?
- Why does the Bible tell some stories more than once—and in such different ways?
- Why does the Bible speak such very different messages in some places than it does in others?

February 26-27 at Prince of Peace, Portage

## Church Health and Disabilities

Rev. Mark Stephenson, Director of Disability Concerns, Christian Reformed Church in North America

*Everybody Belongs. Everybody Serves.* Learn ways your congregations can intentionally seek

- To end the isolation and disconnectedness of persons with disabilities and their families;
- To nurture the spiritual lives of people with disabilities so that they become professing and active members of their churches; and
- To encourage the gifts of people with disabilities so that they can serve God fully in their churches.

## Historical Overview of the Scriptures and Exploration of Genesis 1-11

Julie Faith Parker, Assistant Professor of Old Testament, Trinity Lutheran Seminary, Columbus Ohio

Dr. Parker shares these thoughts: “Some people fear that academic study of the Bible will shake their faith – yet the Word of God can easily withstand whatever questions our inquiring minds may bring to bear upon it. Indeed, as our knowledge of the Bible grows, we fall more deeply in love with this cherished text.”

March 11-12 (location to be announced)

## Mission Interpreter Training

Bill Duggan, Mission Interpreter Training Coordinator explores ways congregations benefit with Mission Interpreters in our midst:

- We grow in discipleship and spirit.
- We look beyond our congregation and see how we are connected to ministry around the world.
- We claim our identity as partners in the wider church and become influential advocates for ministry beyond the walls of our own congregations.

## **Our Faith Ancestors and Exploration of Genesis 12-50**

Julie Faith Parker, Assistant Professor of Old Testament Studies at Trinity Lutheran Seminary guides us in this study. Abraham, Isaac, Jacob, and Joseph are often called the patriarchs or fathers of the church. The society in which the Old Testament was written was one in which men and boys were the leaders and in which women and girls were considered property. As a result, much less is said about the women who loved and served God and, today, we miss those stories. From what little is told about them, we learn much about how we can be faithful. In this study we refer to all these men and women as faith ancestors.

April 30 at St Timothy, Midland

## **Ministry to Sick and Shut In**

Kathy Bonn, Diaconal Minister, Director of Pastoral Care, Covenant Healthcare, Saginaw MI

Kathy introduces us to some basic components of effective pastoral care and leads us in some exercises to help us identify our gifts in this area.

---

For more information about Equipping Leaders for Mission and Ministry, contact the administrator, Rebecca Bossenbroek at [rebeccabossenbroek@comcast.net](mailto:rebeccabossenbroek@comcast.net) or 517-927-4755. Also, visit [www.mittensynod.org](http://www.mittensynod.org), click on LEADERS and EQUIPPING LEADERS FOR MISSION AND MINISTRY.

# OPPORTUNITIES TO SERVE THE LORD

## FEBRUARY 2016

### ACOLYTES

07  
14  
21  
28

### HOSPITAL

JANET CHRONINGER

### LECTORS

07 CHERYL WERBLOW  
14 CORINNE FRALEY  
21 SHARON ENGSTROM  
28 RUBY HASKE

### USHERS

JOEL SUSZEK  
GARY & KAY GROVE  
TOM BRENNAN  
RICK ENGSTROM

### GREETERS

07 BRIAN & BETHANY POPOUR FAMILY  
14 ROGER & JEANNE PANKEY  
21 LINDA GAPSKE, ELSA PHILLIPS  
28 SHELLY OLSEN FAMILY

### COUNTERS

CHRIS CHRISTOPHERSON  
MARGE WEBER  
BETHANY POPOUR

### COMMUNION ASSISTANTS

CLARENCE & BONNIE CROSS

### ALTAR GUILD

BETHANY POPOUR  
ANGIE CRITTENDEN  
BARB WERLE

### FLOWERS

07  
14  
21  
28

### COFFEE HOUR

07 LINDA GAPSKE, CHARLOTTE WERTH,  
PAM KIRCHOFF  
14 PATTI TUCKER, POLLY COOK,  
ELSA PHILLIPS  
21 CLARENCE & BONNIE CROSS  
28 WAYNE & CHRIS CHRISTOPHERSON

***PLEASE, please, please try to find a replacement or someone  
to switch with if you are unable to fulfill your Sunday  
scheduled duty AND share the change with Peggy. Thank you!***

# OPPORTUNITIES TO SERVE THE LORD

## MARCH 2016

### ACOLYTES

06  
13  
20  
27

### HOSPITAL

JANET CHRONINGER

### LECTORS

06 SANDY WELCH  
13 VERNA FURZE  
20  
27 Early DAWN ANDERSON  
Late RUBY HASKE

### USHERS

ROGER & JEANNE PANKEY  
DON FURZE  
MATT, EVERETT & OLIVIA HASKE

### GREETERS

06 GORDON & DOROTHY HANSEN  
13 MELISSA & MADISON TIMMRECK  
20 DAWN ANDERSON, ANNE GENTRY  
27 Early JEFF & SANDY WELCH  
Late JOELYN RICH, PHRAN LUDINGTON

### COUNTERS

CHERYL LANG  
CINDY SUSZEK

### COMMUNION ASSISTANTS

WAYNE & CHRIS CHRISTOPHERSON

### ALTAR GUILD

SANDY WELCH  
JOELYN RICH  
MARY ROWADER

### FLOWERS

06  
13  
20  
27 EASTER FLOWERS

### COFFEE HOUR

06 BARB WERLE, ANGIE CRITTENDEN,  
ELLIE WALKER  
13 RUBY & OLIVIA HASKE  
20 JOE & DAWN GENTRY, ANNE GENTRY  
27 EASTER BREAKFAST

***PLEASE, please, please try to find a replacement or someone  
to switch with if you are unable to fulfill your Sunday  
scheduled duty AND share the change with Peggy. Thank you!***

# February



## Birthdays



## Anniversaries of Baptism

**February 3**  
Darlene Freel

**February 5**  
Judith Douglas

**February 12**  
Thomas Lappan

**February 13**  
Stephanie Adamski

**February 16**  
Alexandra Garant

**February 19**  
Rhonda Himes  
Cody Suszek

**February 22**  
Joseph Gentry  
Steven Lappan

**February 23**  
Mitchell Agius  
Judy Black  
Laura Thompson

**February 24**  
Kenda Yochum

**February 25**  
Gracelyn Gohlke

**February 26**  
Kurt Smith

**February 27**  
Matthew Haske  
Rebecca Petrilli

**February 28**  
Davis Crittenden

**February 2**  
Brianna Himes  
Charles McKay

**February 3**  
Alexandra Garant

**February 4**  
Kathryn Reynolds  
Karen Upham

**February 5**  
Eleanor Coddington  
Kurt Smith

**February 6**  
Stephanie Ihnat

**February 7**  
Jeremy Jacobs

**February 9**  
Sandra Garant

**February 10**  
David Chroninger  
Tracey Urlaub

**February 11**  
Erwin Simi

**February 15**  
Matthew Haske  
Cheryl Werblow

**February 18**  
Joel Suszek

**February 19**  
Jon Carr  
Michael Dekett  
Taylor Denstaedt  
Trevor Denstaedt

**February 20**  
Maggie O'Connor

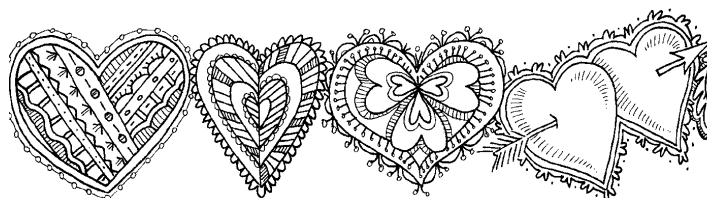
**February 21**  
Dustin Crittenden

**February 24**  
Barb Werle

**February 26**  
Ashley Brodziak

**February 27**  
Joshua Engstrom

**February 28**  
Astrid Fitzpatrick  
Nathaniel Jordan



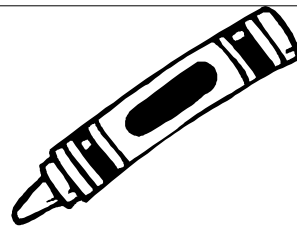
## Wedding Anniversaries

2nd  
12th

Gerald & Barbara Mudge  
Edward & Elvira Jahnke



# Kid's Page



## GUIDING LIGHT

Make this flashlight to remember that God, our light, always shows us the way.

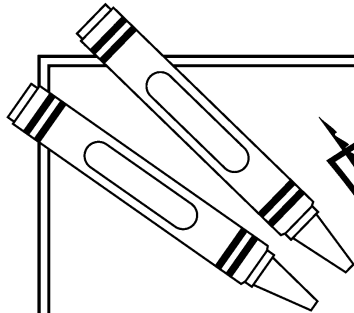


### What you need:

- Flashlight with handle strap
- Yarn (6 to 8 inches)
- Colorful pony beads
- Stickers (including foam letters)
- Batteries

### What you do:

1. Tie the yarn through the flashlight's handle strap so two equal lengths hang down.
2. String the pony beads onto the two yarn lengths, and secure the ends with knots.
3. Decorate the flashlight with stickers. Use letters to spell "God is light."
4. Keep the flashlight by your bedside as a reminder of God's guidance. Use the flashlight to read a Bible verse before bed each night!



## PUZZLE

### LET THERE BE LIGHT

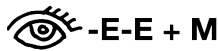
In a world of darkness, God guides us so we can walk in his ways.

*Directions: Write the name of each picture, subtracting and adding letters as indicated. Then fill in the blanks to complete 2 Samuel 22:29, NIV.*

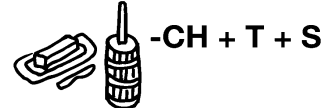
"Y O U , \_\_\_\_\_ , A R E



\_\_\_\_\_ ; T H E



M Y



\_\_\_\_\_ D + \_\_\_\_\_ + \_\_\_\_\_ - T + S

I N T O \_\_\_\_\_ .



2 SAMUEL 22:29, NIV

Answer: "You, LORD, are my lamp; the LORD turns my darkness into light." 2 Samuel 22:29, NIV



## EASTER FLOWERS ORDER FORM

If you would like to place flowers in the church during our Easter Worship, please fill out this form and put it in the offering plate or leave it in the church office. **Please choose between lily, hyacinth, daffodil, or tulip** and specify below the type of flowers you wish to order and your dedication. **You may also make a donation to our Flower Fund, but not order a plant,** and list a dedication below. (These donations will help cover the flower expense for weeks that members do not place flowers on the altar.) Enclose cash or check payable to Grace Lutheran Church.

### ORDER DEADLINE.....March 4!

I would like \_\_\_\_\_ lilies at \$9.00 each  
I would like \_\_\_\_\_ hyacinths at \$9.00 each  
I would like \_\_\_\_\_ daffodils at \$9.00 each  
I would like \_\_\_\_\_ tulips at \$9.00 each  
I would like to make a Flower Fund donation \$ \_\_\_\_\_

In memory of \_\_\_\_\_

In honor of \_\_\_\_\_

Given by \_\_\_\_\_

Flowers may be picked up after the late service on Easter morning.

**THANK YOU**



## EASTER FLOWERS ORDER FORM

If you would like to place flowers in the church during our Easter Worship, please fill out this form and put it in the offering plate or leave it in the church office. **Please choose between lily, hyacinth, daffodil, or tulip** and specify below the type of flowers you wish to order and your dedication. **You may also make a donation to our Flower Fund, but not order a plant,** and list a dedication below. (These donations will help cover the flower expense for weeks that members do not place flowers on the altar.) Enclose cash or check payable to Grace Lutheran Church.

### ORDER DEADLINE.....March 4!

I would like \_\_\_\_\_ lilies at \$9.00 each  
I would like \_\_\_\_\_ hyacinths at \$9.00 each  
I would like \_\_\_\_\_ daffodils at \$9.00 each  
I would like \_\_\_\_\_ tulips at \$9.00 each  
I would like to make a Flower Fund donation \$ \_\_\_\_\_

In memory of \_\_\_\_\_

In honor of \_\_\_\_\_

Given by \_\_\_\_\_

Flowers may be picked up after the late service on Easter morning.

**THANK YOU**